

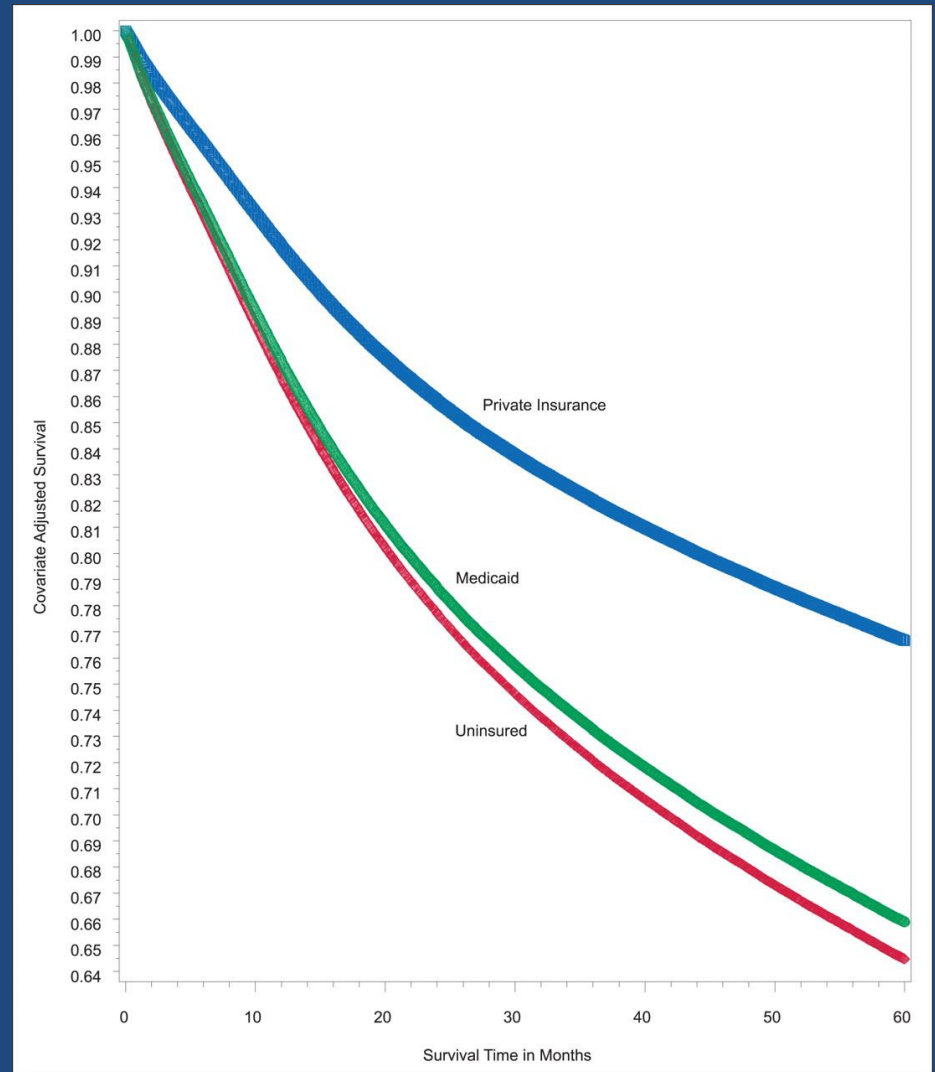
Washington Cancer Institute
MedStar Washington Hospital Center

“Advanced Colorectal Cancer in the Neighborhood”

A Data-Based / Community-Based Participatory
Research Outreach Project

Cancer Survival by Insurance Status

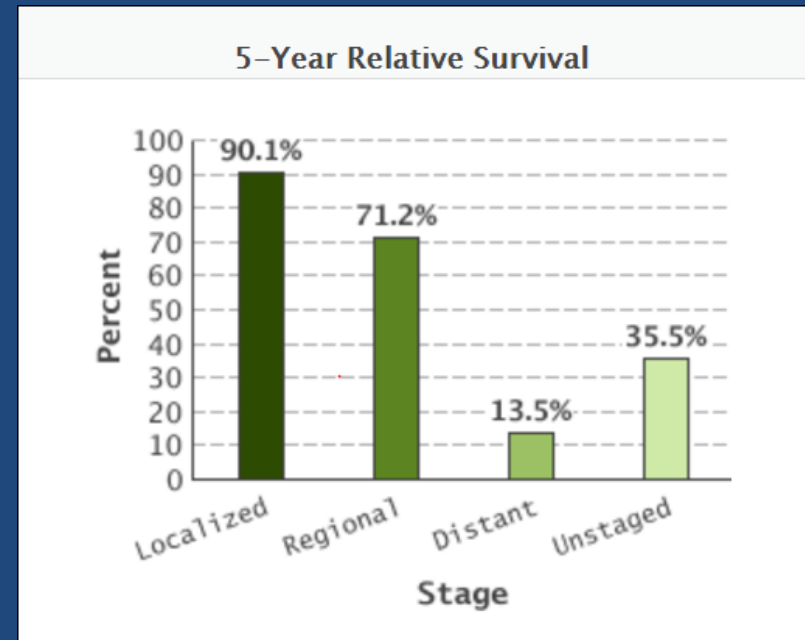
Patients who were uninsured and those who were Medicaid-insured at the time of diagnosis were 1.6 times as likely to die in 5 years as those with private insurance



“Stage II-III-IV Colorectal Cancer in the Neighborhood”

Colorectal cancer cases by Stage. 2006-2011

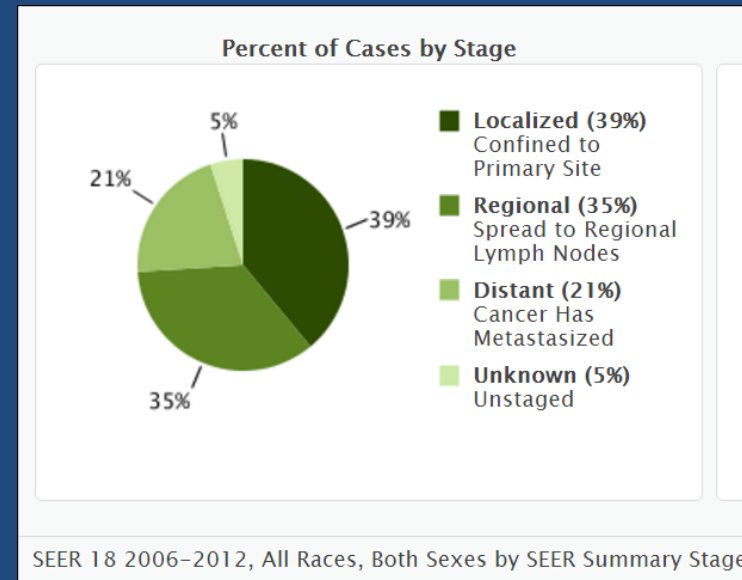
Stage	Number	Percent
I	422	32%
II	296	23%
III	304	23%
IV	292	22%
TOTAL	1314	100%



“Stage II-III-IV Colorectal Cancer in the Neighborhood”

Colorectal cancer cases by Stage. 2006-2011

Stage	Number	Percent
I	422	32%
II-III	600	46%
IV	292	22%
TOTAL	1314	100%



Only 32% of colorectal cases seen at MedStar Washington Hospital Center were found in a curable Stage I

68% of cases were already incurable when found

“Stage II-III-IV Colorectal Cancer in the Neighborhood” Cases by State of Residence. 2006-2011 (N=892)

State	Number	Percent
DC	409	46%
MD	432	48%
VA	37	4%
Other	14	2%
TOTAL	892	100%

46% of incurable colorectal cases seen at MedStar Washington Hospital Center were Washington DC residents

“Stage III-IV Colorectal Cancer in the Neighborhood” Cases by State of Residence. 2006-2011 (N=596)

State	Number	Percent
DC	276	46%
MD	290	49%
VA	20	3%
Other	10	2%
TOTAL	596	100%

46% of Stage III-IV colorectal cases seen at MedStar Washington Hospital Center were Washington DC residents

“Stage III-IV Colorectal Cancer in the Neighborhood”

Cases by Ward of Residence, Washington D.C.

2006-2011 (N=276)

Ward	Number	Percent
Ward 5*	134	49%
Other Wards	142	51%
Total	276	100%

49% of incurable Stage III-IV colorectal cases seen at MWHC were residents of Ward 5

* Based on location and need, MedStar Washington Hospital Center and the MedStar Health Corporate Community Health Department defined Ward 5 as the target area for Community Health Outreach Programs. Includes Zip Codes 20001-20002-20011-20017-20018

“Stage III-IV Colorectal Cancer in the Neighborhood”

Cases by Race, Ward 5*. 2006-2011 (N=134)

Race	Number	Percent
African American	122	91%
White	9	7%
Other	3	2%

91% of incurable colorectal cases in people living in Ward 5 were African Americans

* Based on location and need, MedStar Washington Hospital Center and the MedStar Health Corporate Community Health Department defined Ward 5 as the target area for Community Health Outreach Programs. Includes Zip Codes 20001-20002-20011-20017-20018

“Stage III-IV Colorectal Cancer in the Neighborhood” Cases by Gender, Ward 5*. 2006-2011 (N=134)

Gender	Number	Percent
Male	51	30%
Female	83	70%

More females than men in people living in Ward 5 were seen at MWHC with incurable colorectal cases

* Based on location and need, MedStar Washington Hospital Center and the MedStar Health Corporate Community Health Department defined Ward 5 as the target area for Community Health Outreach Programs. Includes Zip Codes 20001-20002-20011-20017-20018

“Stage III-IV Colorectal Cancer in the Neighborhood”

Cases in Ward 5 by Age. 2006-2011 (N=134)

Age	Number	Percent
< 40	4	3%
41 - 49	15	11%
50 - 59	34	25%
60 - 69	25	19%
70 - 79	30	22%
> 80	26	20%

14% of incurable colorectal cases in people living in Ward 5 are younger than 50 (higher than national average)

42% of incurable colorectal cases in people living in Ward 5 are older than 70

“Stage III-IV Colorectal Cancer in the Neighborhood”

Cases in Ward 5 by Health Insurance Coverage.

2006-2011 (N=134)

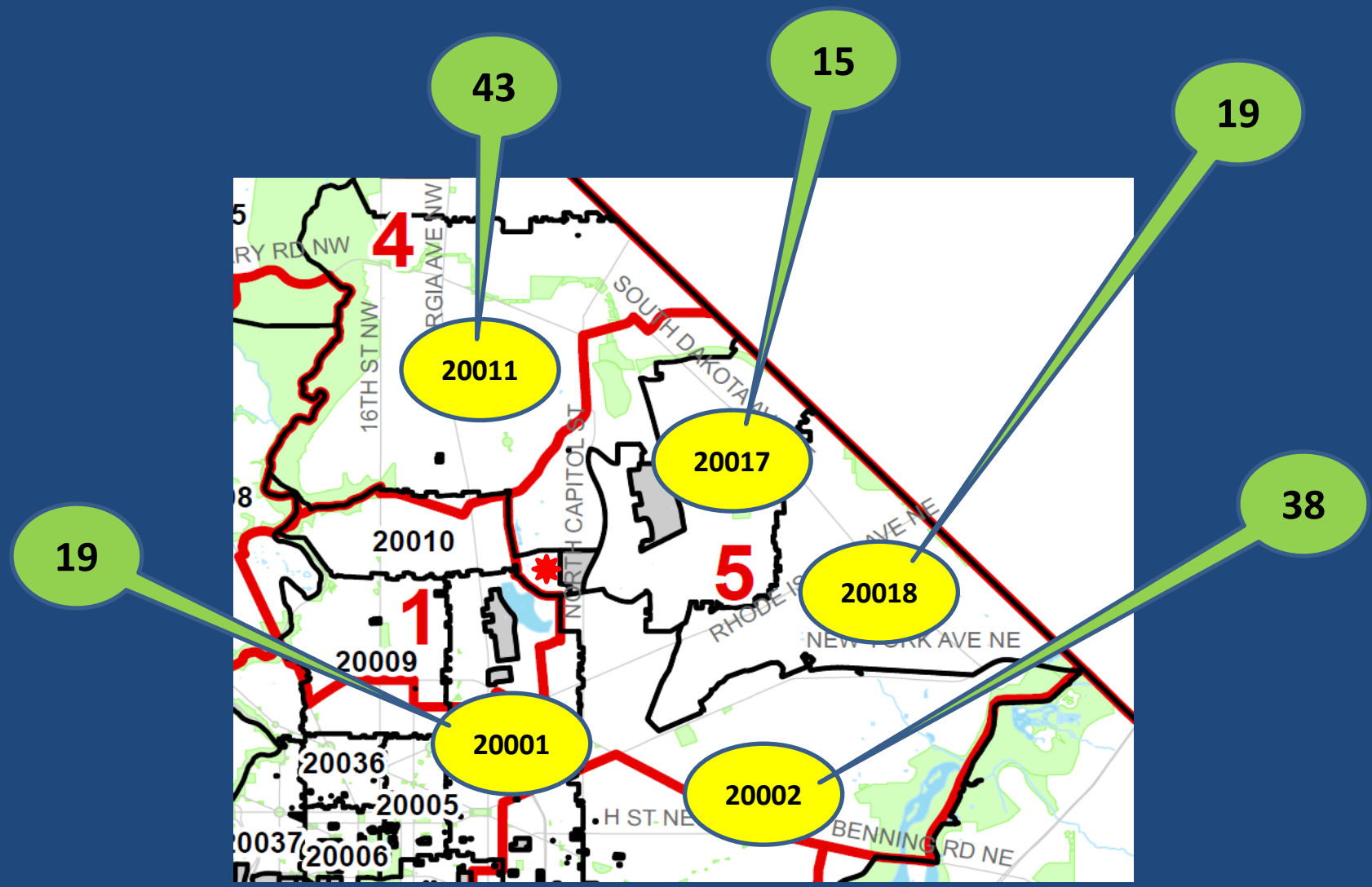
Type of Insurance	Number	Percent
Medicaid	11	8%
Medicare	58	43%
Private	52	39%
Not specified	9	7%
<u>Uninsured</u>	4	3%

97% of patients with advanced colorectal cancer living in Ward 5 do have health insurance

Only 4 out of 193 patients with incurable colorectal cases living in Ward 5 had no health insurance...

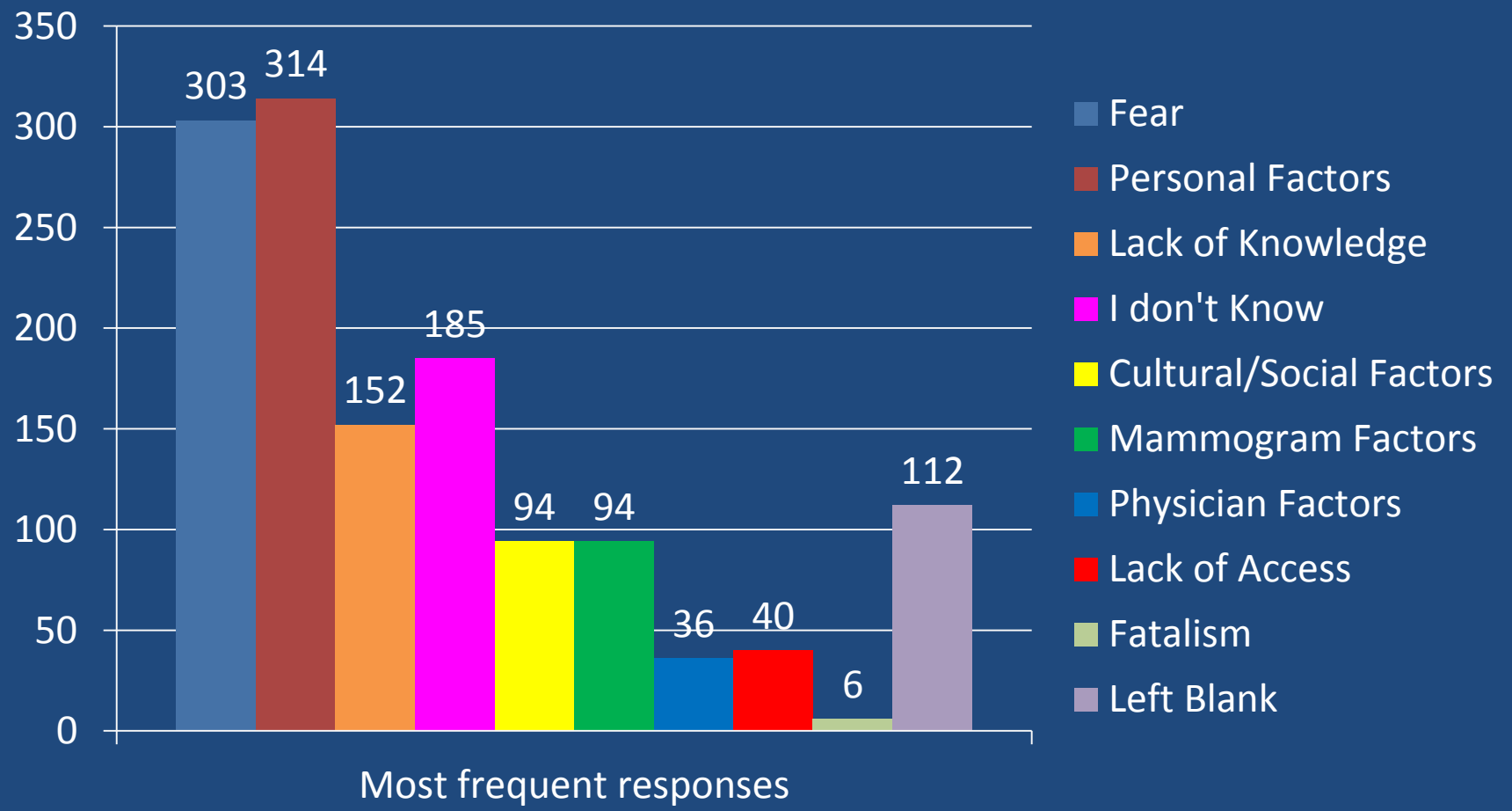
“Stage III-IV Colorectal Cancer in the Neighborhood”

Cases by Zip Code within Ward 5. 2006-2011 (N=134)



Why do you feel that women who live in Ward 5 are suffering from late stage/advanced breast cancer even though they have health insurance?

1091 questionnaires / 1336 quotes



Colon Cancer Prevention in the Neighborhood

**MEDIA
OUTREACH**

**GOVERNMENT
INSURANCE
PARTNERSHIP**

**COMMUNITY
OUTREACH**



**PRIVATE
INSURANCE
PARTNERSHIP**

**POLITICAL
PARTNERSHIP**

**PRIMARY
CARE
PARTNERSHIP**

